

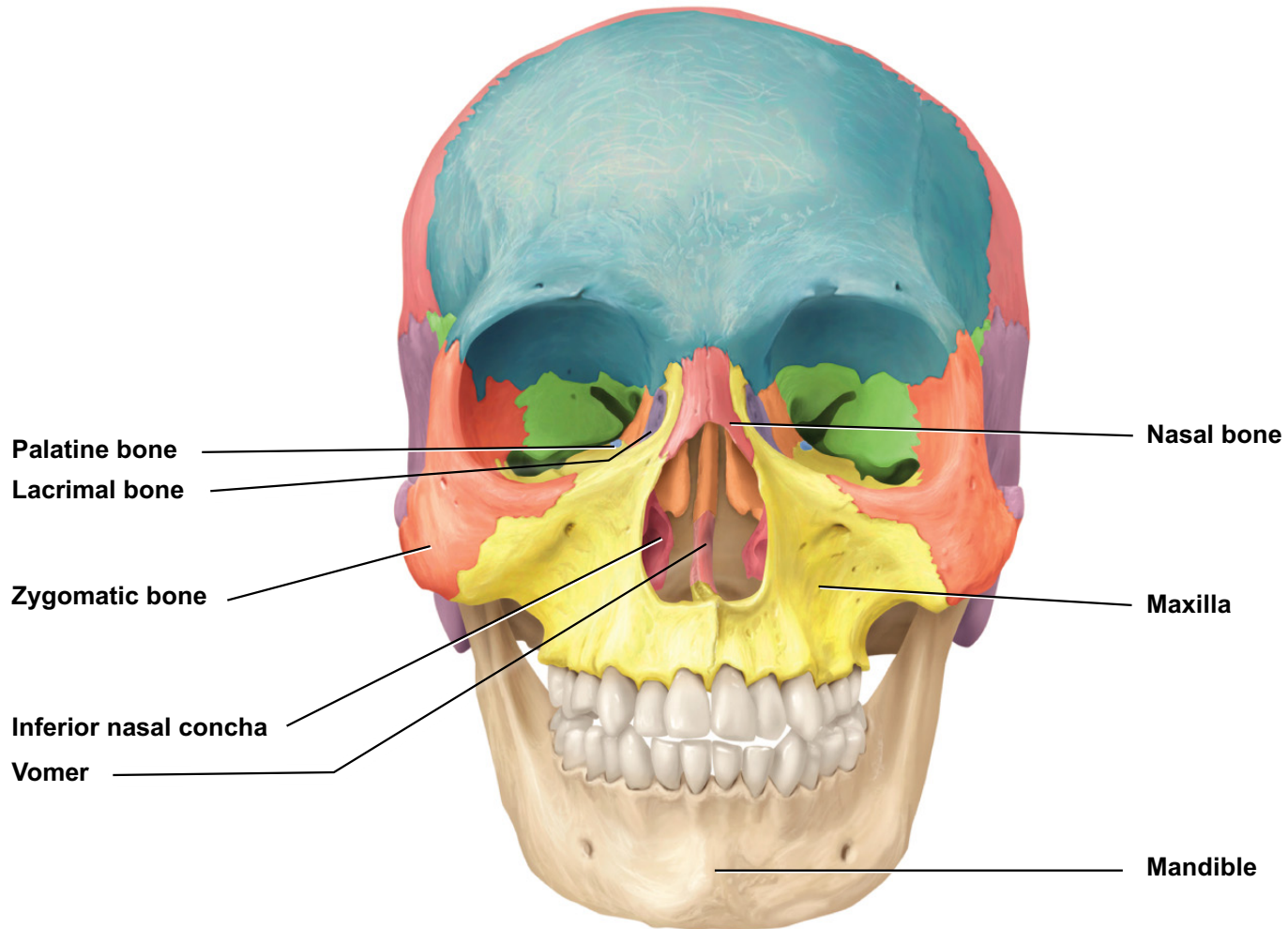
Module 5 LO3

Skull: Facial Bones

Dr. Lisa Brinn

lbrinn@fiu.edu

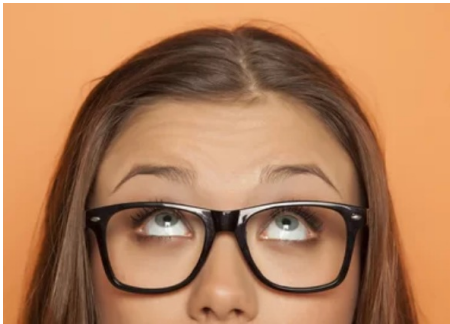
3. Facial Bones



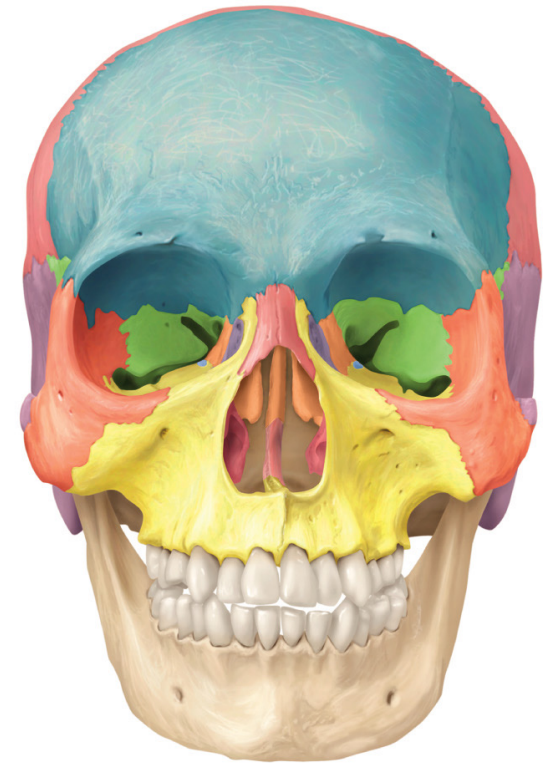
ANTERIOR

Nasal Bones

- These are paired bones that form the bridge of the nose
- Provide attachment for facial expression muscles
- Small, flattened, rectangular-shaped



ANTEROLATERAL



ANTERIOR

Lacrimal Bones

- These are paired bones that form the anterior portion of the medial wall of the eye socket.
- Smallest of the face
- Contains the lacrimal fossa



ANTEROLATERAL



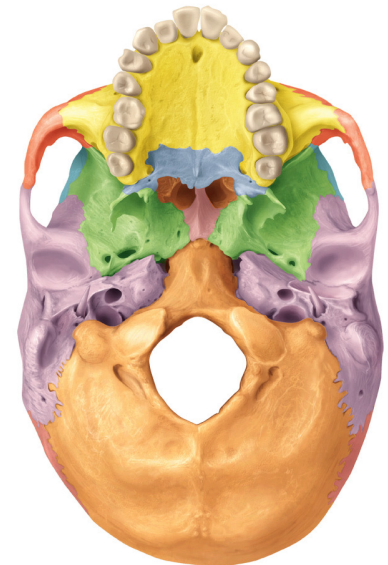
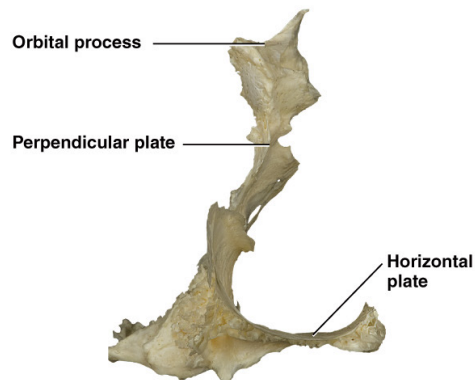
ANTERIOR

Palatine Bones

- Paired L-shaped bones that form
 - posterior edge of the hard palate
 - portions of nasal cavity wall and floor
 - portions of eye socket



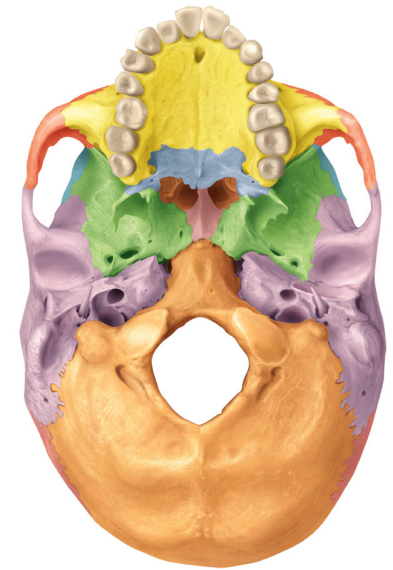
ANTERIOR



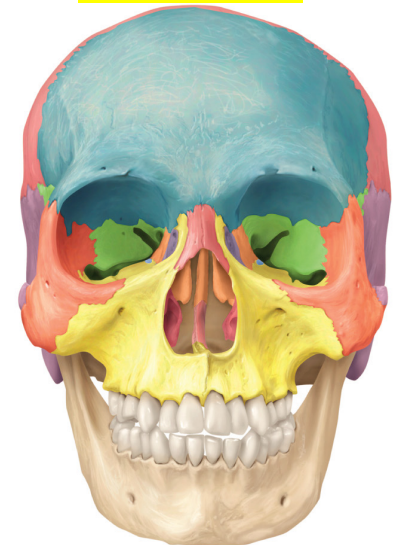
INFERIOR

Maxillae Bone

- Paired bone that unites to form the upper jawbone
- Articulates with every bone of the face except mandible
- Forms:
 - Lateral walls and floor of nasal cavity
 - Floor of orbits
 - Most of hard palate
- Bone features:
 - Infraorbital foramen



INFERIOR

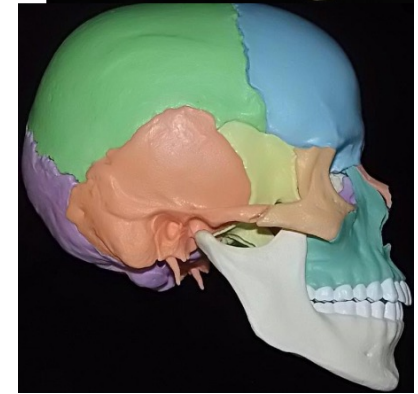
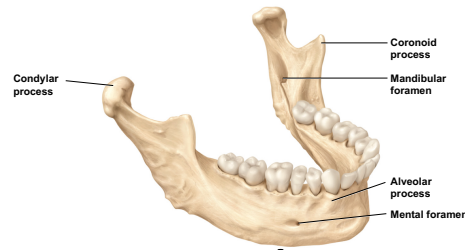


ANTERIOR

ANTEROLATERAL

Mandible

- Unpaired, arch-shaped lower jawbone
- Largest and strongest facial bone
- Only movable skull bone (other than ossicles)
- Bone features:
 - Mandibular condyle (condylar process)
 - Mental foramen
 - Mandibular foramen



LATERAL



INFERIORLATERAL



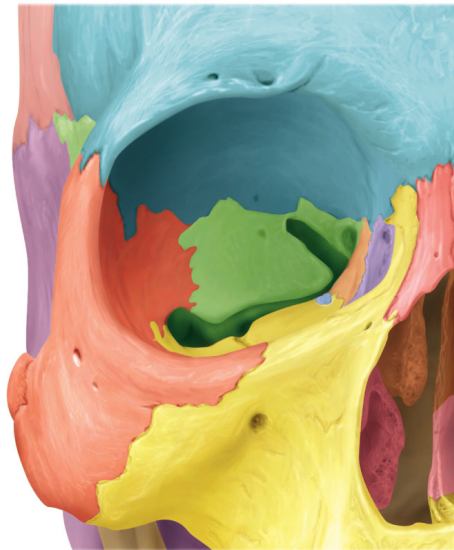
ANTEROLATERAL

Zygomatic Bone

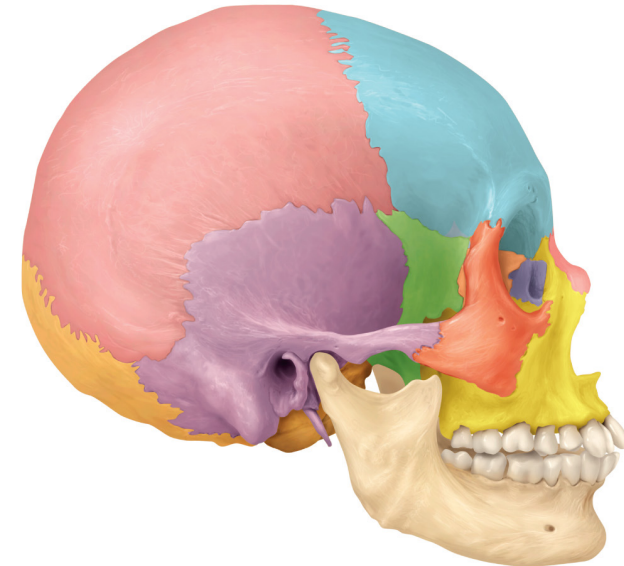
- Paired bones known as cheekbones
- Form:
 - Prominences of cheeks
 - Part of lateral wall and floor of each orbit
- Articulate:
 - Frontal
 - Maxilla
 - Sphenoid
 - Temporal
- Bone feature:
 - Temporal process



ANTEROLATERAL



ANTERIOR



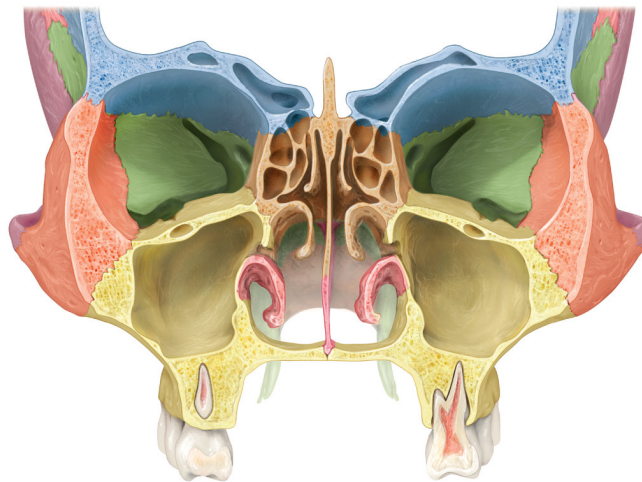
LATERAL

Nasal Septum

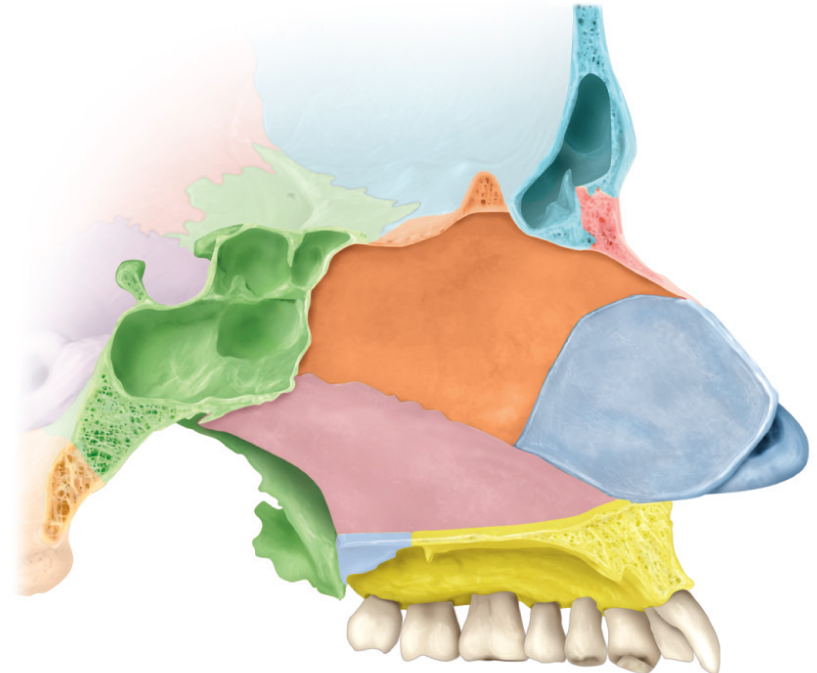
- Formed:
 - Superiorly by the perpendicular plate of the ethmoid
 - Inferiorly by the vomer bone
- Clinical Connection
 - Deviated nasal septum



ANTEROLATERAL



ANTERIOR



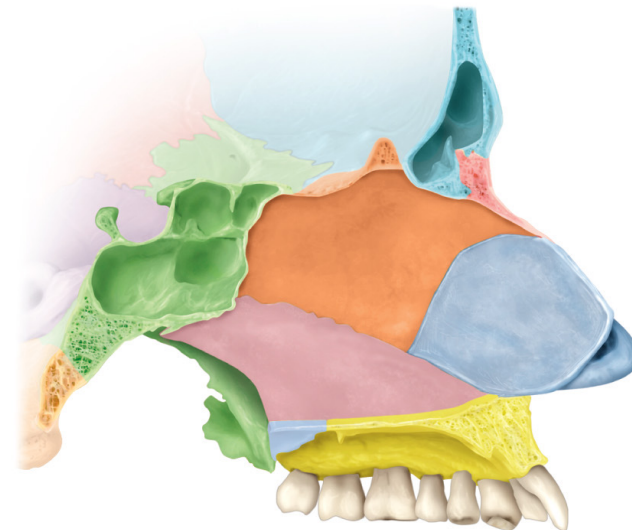
MID SAGITTAL

Vomer Bone

- Unpaired triangular-shaped bone
- Forms inferior portion of nasal septum
- Articulates
 - Superiorly with perpendicular plate of ethmoid and sphenoid
 - Inferiorly with maxillae and palatine



ANTEROLATERAL



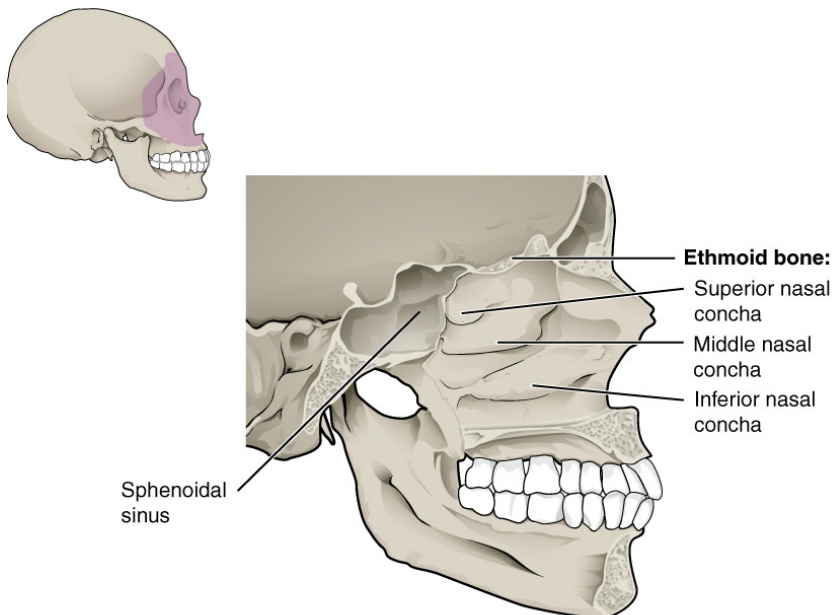
MID SAGITTAL

Inferior Nasal Conchae

- Paired scroll-like shaped
- Help to swirl and filter air before it passes into lungs
- Not part of the ethmoid bone



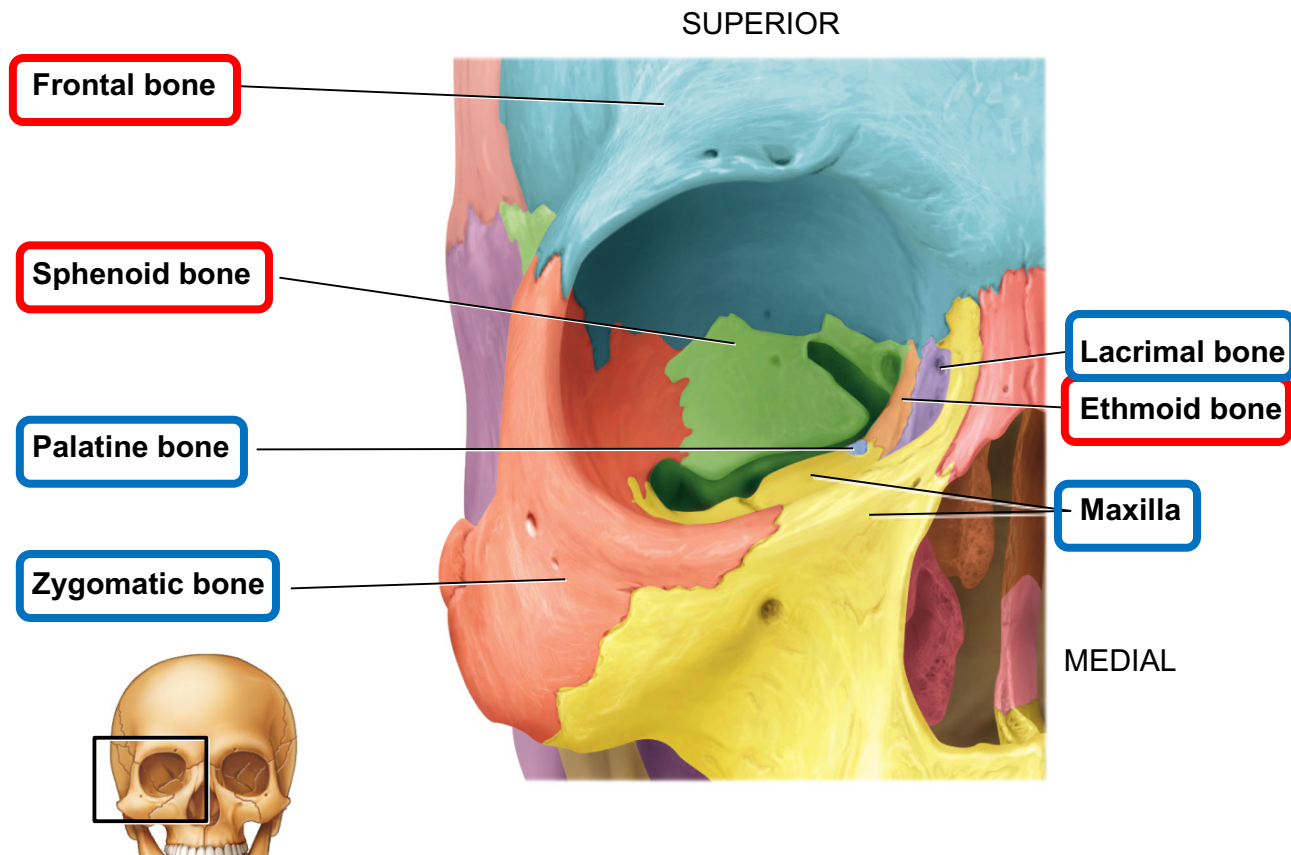
ANTEROLATERAL



MIDSAGITTAL

Bones that form the Orbits

- Three **cranial bones** and four **facial bones** form each orbit



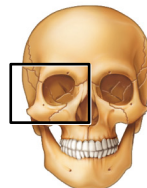
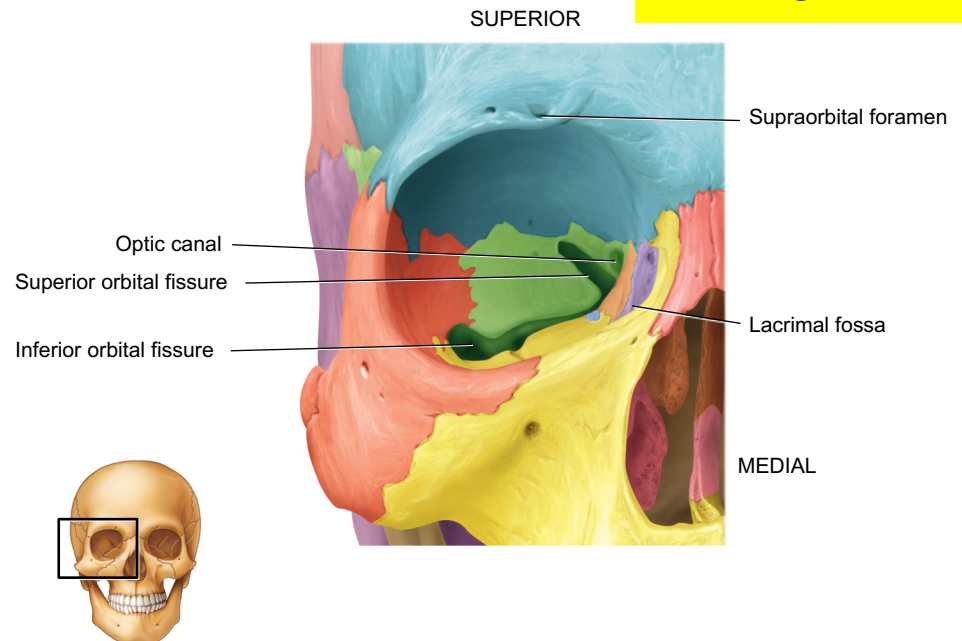
ANTERIOR

Details of the Orbit

- Associated with each orbit are five openings:
 - Optic canal
 - Superior orbital fissure
 - Inferior orbital fissure
 - Supraorbital foramen
 - Lacrimal fossa



ANTEROLATERAL



ANTERIOR